



POP 3 Plus 3D Scanner

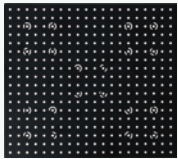
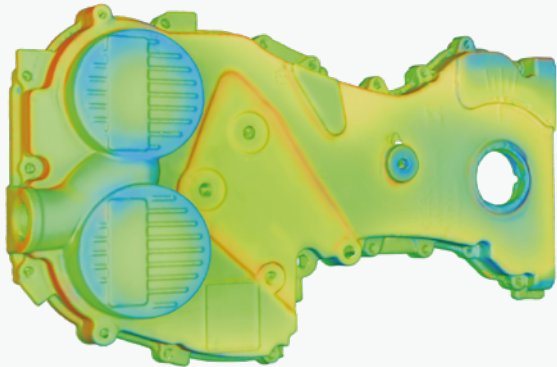
Every Detail Optimized

POP 3 Plus 3D Scanner

The POP 3 Plus updates the POP series with 20% better accuracy and precision, and with its new optical projector zoom, it's ready to capture finer details.

Single-frame Precision

Up to **0.04 mm**



New Calibration Board

20% Better Accuracy and Precision

Better Detail Capture

Up to **x2 Optical Zoom**



x1



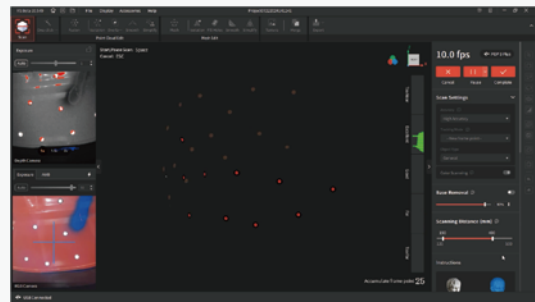
x1.5



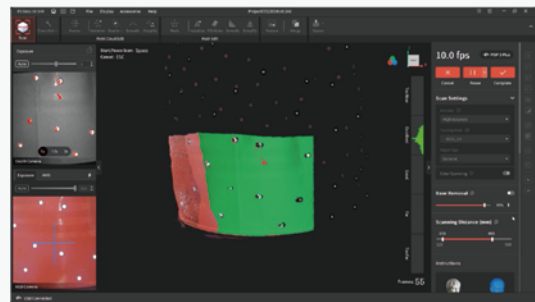
x2

Better Marker Tracking

Global Marker Tracking Mode



· Mapping Global Markers



· Capturing the Point Cloud

IR + RGB Fill Lights

Create Full-color
3D Models



Fast Scanning Speeds

Up to 18 fps



Stabilized Scanning

9-axis IMU



Applications



3D Printing



Historic Preservation



3D Animation



Reverse Engineering



Product Design



Healthcare



Specifications

Product Name	POP 3 Plus 3D Scanner
Technology	Dual-camera Infrared Structured Light
Single-frame Precision, up to ^①	0.04 mm
Single-frame Accuracy, up to ^②	0.08 mm
Fused Point Distance, up to	0.05 mm
Working Distance	150 - 400 mm
Single Capture Area at Nearest Distance	61 × 68 mm at 150 mm
Single Capture Area at Furthest Distance	244 × 180 mm at 400 mm
Minimum Scan Volume	20 × 20 × 20 mm
Maximum Scan Volume	2 × 2 × 2 m
Scanning Speed, up to	18 fps
Camera Resolution, up to	Depth Camera: 1 Megapixels RGB Camera: 1 Megapixels
CPU	2 core, 1.6 GHz
3D Light Source ^③	Class 1 Infrared Light
Fill Lights ^④	Depth Camera: 4 RGB Camera: 2
Position Sensors	9-axis IMU

Notes:

- ① ② Precision and Accuracy were both acquired in a controlled lab environment. Actual results might vary, subject to the operation environment.
- ③ Class 1 Laser: Avoid direct eye exposure for extended periods! Refer to Standards for Class 1 Lasers for details.
- ④ This product has flashing lights, which may not be suitable for people with photosensitive epilepsy.



+1 (888) 807-3339



sales@revopoint3d.com



www.revopoint3d.com



Contact Us



Follow Us